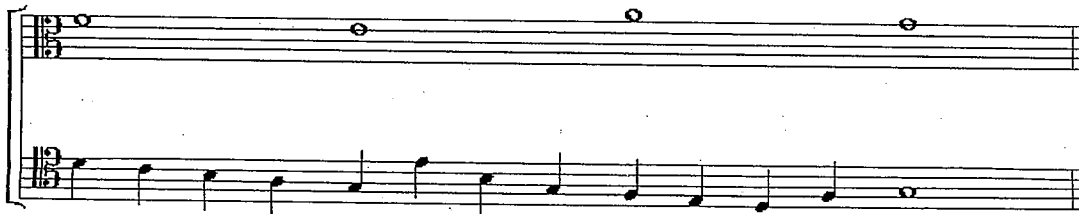


科目：音樂理論【音樂系二年級】

(請於試題卷上作答)

一、改錯題。以十六世紀帕勒斯特利納(Palestrina)之對位風格為標準，圈選出下列譜例中的寫作錯誤並說明原因，答案須完整才能得分。作答時請將所圈選之處標示清楚並給予編號。(22%)



二、以兩個聲部的進行方式寫出各種和聲外音的形態，包含經過音、鄰音、倚音、逃音、駢枝音、掛留音和先現音。(14%)

經過音                      鄰音                      倚音                      逃音

駢枝音                      掛留音                      先現音

The diagram shows two treble clef staves. The first staff is divided into four measures for writing passing tone (經過音), neighbor tone (鄰音),倚音, and escape tone (逃音). The second staff is divided into three measures for writing 駢枝音, 掛留音, and 先現音.

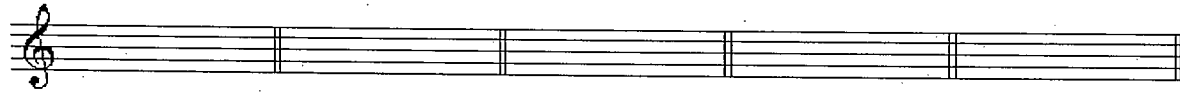
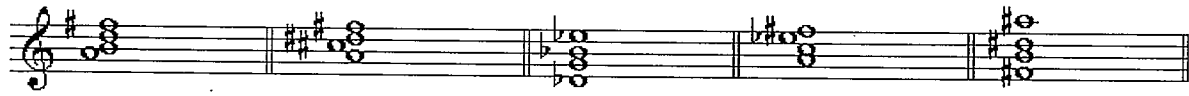
三、以混聲四部的進行方式寫出下列所指定的終止式，含調性與級數。(22%)

正格完全終止      正格不完全終止      半終止                      教會終止                      弗里吉安半終止

The diagram shows a grand staff (treble and bass clefs) divided into five measures for writing different types of cadences: authentic perfect (正格完全終止), authentic imperfect (正格不完全終止), half (半終止), church (教會終止), and Phrygian half (弗里吉安半終止).

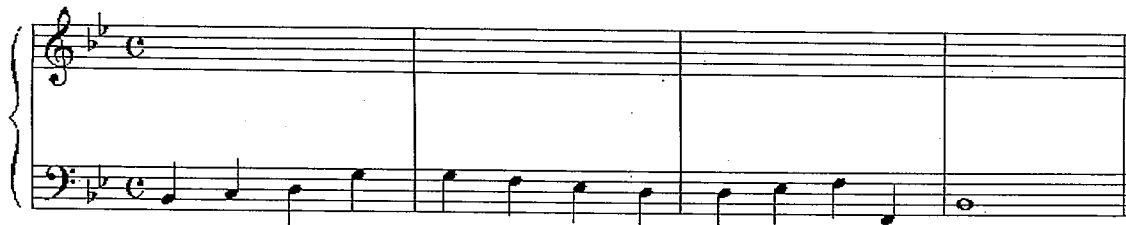
科目：音樂理論【音樂系二年級】

四、依據下列所給予的和絃位置，寫出一個調性與級數含轉位符號；或是所給予的調性與級數含轉位符號，寫出調號與和絃位置。(10%)



d:V6                  f#:V4                  G:V4                  e:V7                  f:V6  
5                          3                          2                          5                          5

五、以混聲四部的方式完成下列數字低音題，需要註明調性與級數。(14%)



6 6                  6<sup>b</sup>                  4 6                  6 7  
4                          4                          2                          5<sup>b</sup>                          4  
3

六、分析下列譜例中的調性，和絃級數和樂曲段落結束時的終止式。(18%)

