

國立中山大學 107 學年度碩士暨碩士專班招生考試試題

科目名稱：音樂理論【音樂系碩士班】

題號：461001

※本科目依簡章規定「不可以」使用計算機(問答申論題)

共 5 頁 第 1 頁

【請作答於此試題紙上】

壹、改錯題。(20%) 以帕勒斯崔那(Palestrina)的風格為標準，圈出錯誤位置並註明原因。

貳、寫作題。(18%)

- 1) 以兩個聲部的進行方式，完整的寫出下列所指定的各種和聲外音，包含：經過音、鄰音、掛留音和駢枝音。(8%)

經過音 鄰音 掛留音 駢枝音

- 2) 以混聲四部的進行方式寫出下列所指定的終止式。(10%)

正格完全終止 正格不完全終止 半終止 規避終止 弗里吉安半終止

國立中山大學 107 學年度碩士暨碩士專班招生考試試題

科目名稱：音樂理論【音樂系碩士班】

題號：461001

※本科目依簡章規定「不可以」使用計算機(問答申論題)

共 5 頁第 2 頁

參、和絃分析題。(12%)

1、根據所標示的調性，寫出和絃級數含轉位符號。(6%)

G:
F:
d:
Bb:
Bb:
A:

2、根據所註明的和絃級數與轉位符號，寫出該和絃的調號和音高。(6%)

$g: iv \frac{4}{2}$
 $f: V \frac{4}{3}$
D: V/V
 $e: V \frac{4}{2}$
Eb: V/ii
 $\sharp f: N6$

肆、曲式與分析題。(50%)

下方之音樂片段為一首鋼琴奏鳴曲第一樂章之呈示部。分析後請回答第 4~5 頁之問題（共六題）：

Allegro assai

(6)

(11)

國立中山大學 107 學年度碩士暨碩士專班招生考試試題

科目名稱：音樂理論【音樂系碩士班】

題號：461001

※本科目依簡章規定「不可以」使用計算機(問答申論題)

共 5 頁第 3 頁

(16)

Musical score for exercise (16), consisting of two staves. The upper staff is in treble clef and the lower in bass clef. The music features a sequence of eighth and sixteenth notes in the upper staff, with a bass line of quarter notes and half notes. Fingerings are indicated by numbers 1-5.

(21)

Musical score for exercise (21), consisting of two staves. The upper staff is in treble clef and the lower in bass clef. The music features a sequence of eighth and sixteenth notes in the upper staff, with a bass line of quarter notes and half notes. A dynamic marking of *p* (piano) is present in the lower staff. Fingerings are indicated by numbers 1-5.

(26)

Musical score for exercise (26), consisting of two staves. The upper staff is in treble clef and the lower in bass clef. The music features a sequence of eighth and sixteenth notes in the upper staff, with a bass line of quarter notes and half notes. Dynamic markings of *f* (forte) and *p* (piano) are present. Fingerings are indicated by numbers 1-5.

(32)

Musical score for exercise (32), consisting of two staves. The upper staff is in treble clef and the lower in bass clef. The music features a sequence of eighth and sixteenth notes in the upper staff, with a bass line of quarter notes and half notes. Dynamic markings of *p* (piano) and *f* (forte) are present. Fingerings are indicated by numbers 1-5.

(37)

Musical score for exercise (37), consisting of two staves. The upper staff is in treble clef and the lower in bass clef. The music features a sequence of eighth and sixteenth notes in the upper staff, with a bass line of quarter notes and half notes. Dynamic markings of *f* (forte) and *p* (piano) are present. Fingerings are indicated by numbers 1-5.

(41)

Musical score for exercise (41), consisting of two staves. The upper staff is in treble clef and the lower in bass clef. The music features a sequence of eighth and sixteenth notes in the upper staff, with a bass line of quarter notes and half notes. Fingerings are indicated by numbers 1-5.

(45)

Musical score for exercise (45), consisting of two staves. The upper staff is in treble clef and the lower in bass clef. The music features a sequence of eighth and sixteenth notes in the upper staff, with a bass line of quarter notes and half notes. Fingerings are indicated by numbers 1-5.

國立中山大學 107 學年度碩士暨碩士專班招生考試試題

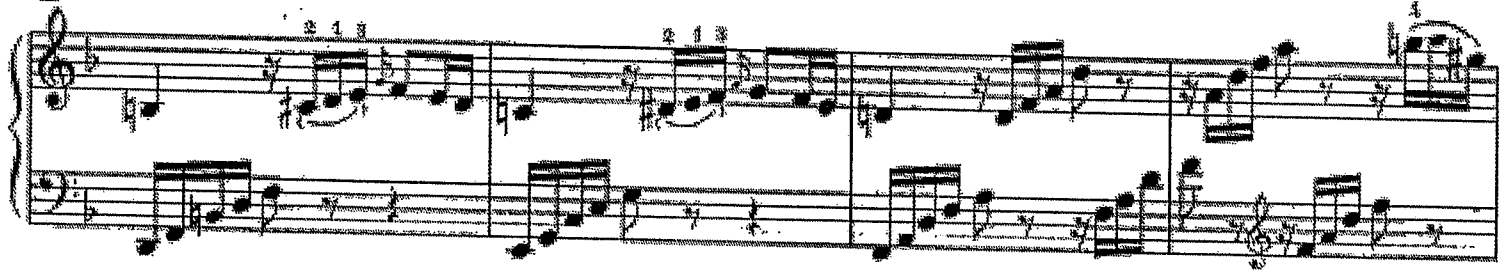
科目名稱：音樂理論【音樂系碩士班】

題號：461001

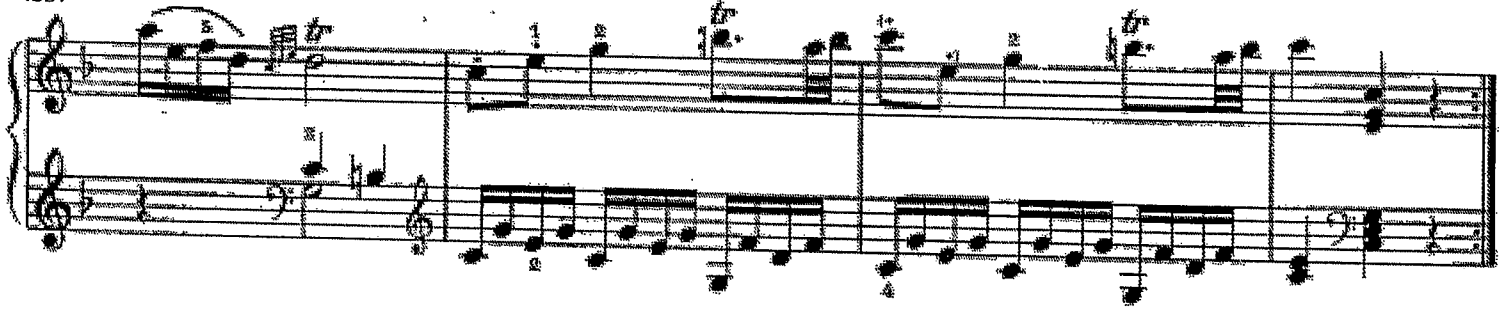
※本科目依簡章規定「不可以」使用計算機(問答申論題)

共 5 頁第 4 頁

(49)



(53)



一、請在下方空白處，以結構圖統整此片段（共 56 小節）之調性及樂句，並標示出主題、過門、尾奏各從第幾小節至第幾小節。(20%)

國立中山大學 107 學年度碩士暨碩士專班招生考試試題

科目名稱：音樂理論【音樂系碩士班】

題號：461001

※本科目依簡章規定「不可以」使用計算機(問答申論題)

共 5 頁第 5 頁

二、請依樂句的構成形式，描述第一主題的樂段特性為何（例如：平行/對比、平衡與否、工整與否等）。(6%)

三、請在譜上標出各樂句的終止式。(7%)

四、請在譜上寫出第 21~26 小節之和聲進行（含正確調性與和弦級數）。(8%)

五、請在譜上寫出第 35~40 小節之和聲進行（含正確調性與和弦級數）。(7%)

六、此曲應為哪個樂派，哪位作曲家之作品？(2%)

國立中山大學 107 學年度碩士暨碩士專班招生考試試題

科目名稱：音樂史【音樂系碩士班】

題號：461002

※本科目依簡章規定「不可以」使用計算機(問答申論題)

共 1 頁第 1 頁

一、解釋名詞 (每題 5 分，共 60 分)

1. *Fidelio*
2. *Rhapsody in Blue*
3. Johann N. Mäzel (1772-1838)
4. Tone Cluster
5. *Sturm und Drang*
6. *In C*
7. Arcangelo Corelli
8. *A Life for the Tsar*
9. Monody
10. Opéra bouffe
11. Madrigal
12. *Eroica Symphony*

二、申論題 (請從 1、2 題中任選一題作答，3、4 題中任選一題作答。每題 20 分，共 40 分)

1. Discuss the distinguishing feature of Franz Joseph Haydn' s music. Please use Haydn' s music as example.
2. Discuss the outline of historically settled Mass liturgy used after c.1014.
3. Discuss the musical development in France between the two World Wars (1918-1945).
4. Discuss the 19th century nationalism in Russia.

試題隨卷繳回